



Duraklick

ECO 0°

## Roofparallel Mounting-System ECO 0°

The Duraklick ECO 0° system is an economical alternative to conventional roof-parallel rooftop systems. As a rule, it enables roof-penetration-free installation on flat and slightly pitched roofs made of bitumen, foil or metal.

It consists of the same high-quality components as our proven flat of systems. Thanks to the special building protection mat under the 230 mm wide base profiles, we guarantee optimum protection of the roof cladding. Lower roof pitches can be stabilized purely by ballast. For monopitch roofs with pitches of over 3.5° (for membrane roofing) or over 5° (for bitumen roofs), additional anti-slip protection is required. For pitched roofs with greater pitches, the base profile is simply guided over the ridge.

The ECO 0° installation system is characterized by its high flexibility and can be easily adapted to different roof types, installation requirements and site conditions.

**Duraklick**

A brand of SOLTOP Energie GmbH



Easy to  
assemble

Non-roof-  
penetrating

Maximum  
space utilization

For more information, please visit [www.soltop-energie.ch](http://www.soltop-energie.ch) & [www.soltop-energie.eu](http://www.soltop-energie.eu)

**SOLTOP Energie AG**  
St. Gallerstrasse 3  
CH-8353 Elgg  
[info@soltop-energie.ch](mailto:info@soltop-energie.ch)

**SOLTOP Energie GmbH**  
Lindauer Straße 15  
D-88145 Hergatz  
[info@soltop-energie.eu](mailto:info@soltop-energie.eu)

**SOLTOP Energie SA**  
Rue des Sablons 8  
CH-3960 Sierre  
[info.fr@soltop-energie.ch](mailto:info.fr@soltop-energie.ch)

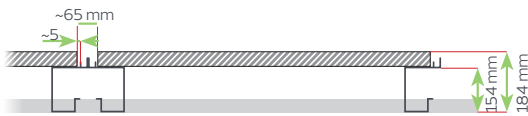
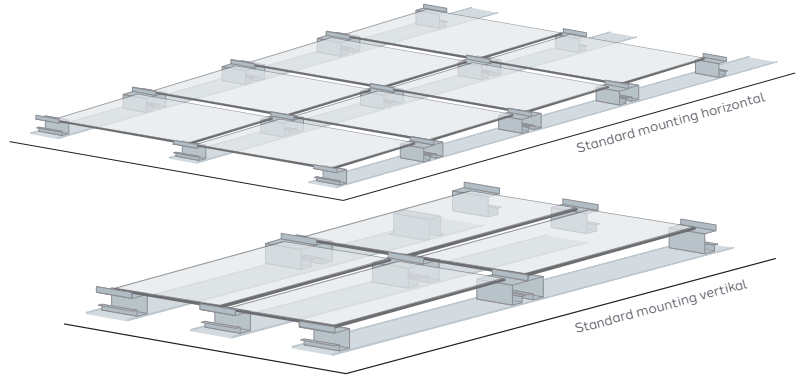
**SOLTOP Energie SA**  
Avenue Haldimand 41  
CH-1400 Yverdon-les-Bains  
[info@soltop-energie.ch](mailto:info@soltop-energie.ch)

# Roofparallel Mounting-System ECO 0°



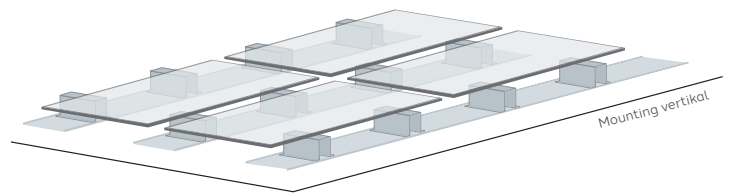
## ECO 0° „Standard“

Cost-effective, flexible installation in vertical and horizontal alignment. The modules are clamped in the corner area - horizontally on the short side, vertically on the long side - with 70 mm long module clamps and earthing pin.



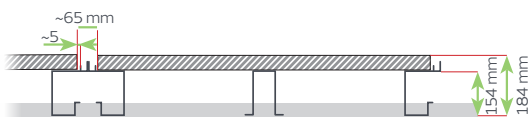
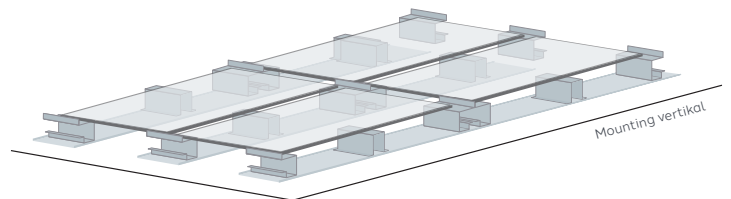
## ECO 0° „Optimum clamping“

Enables secure installation at the specified clamping areas of the modules, even with high snow and wind loads. Requires vertical installation at a maximum roof pitch of 10°.



## ECO 0° „6-point support/clamping“

This system uses both types of supports with six support or clamping points, ideal for locations with high snow and wind loads, even on steeper roofs.



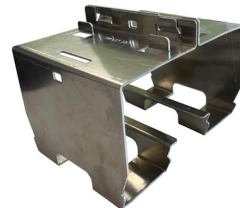
## Technical specifications

Inclination 0°  
 Rail length 0,3 - 6,0 m  
 Surface load from 13,1 kg/m<sup>2</sup> \*  
 Line load from 21,6 kg/m \*  
 Material aluminium /stainless steel  
 \* assuming a module weight of ~23 kg

Module support „Standard“



Two pieces make one hooked into the other!



Module support „ECO 0° Optimal“



For more information, please visit [www.soltop-energie.ch](http://www.soltop-energie.ch) & [www.soltop-energie.eu](http://www.soltop-energie.eu)

**SOLTOP Energie AG**  
 St. Gallerstrasse 3  
 CH-8353 Elgg  
 info@soltop-energie.ch

**SOLTOP Energie GmbH**  
 Lindauer Straße 15  
 D-88145 Hergatz  
 info@soltop-energie.eu

**SOLTOP Energie SA**  
 Rue des Sablons 8  
 CH-3960 Sierre  
 info.fr@soltop-energie.ch

**SOLTOP Energie SA**  
 Avenue Haldimand 41  
 CH-1400 Yverdon-Les-Bains  
 info@soltop-energie.ch