



**Duraklick**

# Flat roof PV mounting system



Duraklick is an innovative PV substructure for flat roofs - without roof penetration. Different designs make Duraklick a universal system for all areas of application, from small detached houses to large industrial or commercial facilities. The lightweight, aerodynamic and self-supporting construction is made entirely of corrosion-resistant aluminum.

Various angles of attack with different aerodynamics to minimize ballast help to successfully meet complex requirements, even on existing roofs with limited load-bearing capacity.



- Easy to assemble
- Height safety system integrated
- Minimal ballasting due to good aerodynamics

**SOLTOP Energie AG**  
St. Gallerstrasse 3  
CH-8353 Elgg  
info@soltop-energie.ch

**SOLTOP Energie GmbH**  
Lindauer Straße 15  
D-88145 Hergatz  
info@soltop-energie.eu

**SOLTOP Energie SA**  
Rue des Sablons 8  
CH-3960 Sierre  
info.fr@soltop-energie.ch

**SOLTOP Energie SA**  
Avenue Haldimand 41  
1400 Yverdon-les-Bains  
info.fr@soltop-energie.ch

# Duraklick PV mounting solutions for flat roofs (bare roof, gravel roof and green roof)

## EW



Module inclination 10°. Orientation east-west. Efficient use of existing roof surfaces.

## GR



Module inclination 10° / 15° / 20°. South or east-west orientation. For green flat roofs.

## HSS

Duraklick offers an integrable, load-bearing fall arrest system (HSS), which is based on a circumferential rail system and offers great freedom of movement for up to four people at the same time.

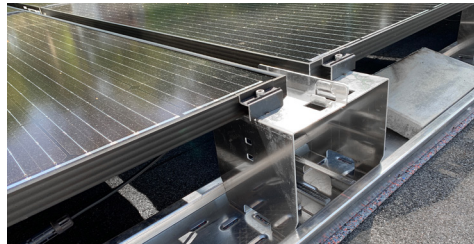
The system is approved throughout Europe and meets the technical requirements of Switzerland.

## ECO



Module inclination 10° / 15° / 20°. South orientation. Economical mounting solution. High yield.

## ECO 0°



Roof-parallel installation. Maximum space utilization. Flexible use.



## SR



Module inclination 10° / 20°. South orientation. Aerodynamically optimized for high wind loads.

## GE



Module inclination 10° / 15°. South or east-west orientation. For gravel and green roofs with low vegetation. Also suitable for "Blue Roof".



## Vorteile des Duraklick Systems:

- The HSS height safety system can be integrated into the PV mounting system, thus eliminating the need to install guardrails or other fall protection systems.
- Thanks to the lightweight aluminum construction, only a small additional load is required.
- No roof penetration necessary.
- Comprehensive planning, installation and service.
- Quick and safe installation.
- Excellent load distribution thanks to 23 cm wide base rail.
- Meets the highest current quality standards and norms.

Your local installer:

For more information, please visit [www.soltop-energie.ch](http://www.soltop-energie.ch) & [www.soltop-energie.eu](http://www.soltop-energie.eu)

**SOLTOP Energie AG**  
St. Gallerstrasse 3  
CH-8353 Elgg  
info@soltop-energie.ch

**SOLTOP Energie GmbH**  
Lindauer Straße 15  
D-88145 Hergatz  
info@soltop-energie.eu

**SOLTOP Energie SA**  
Rue des Sablons 8  
CH-3960 Sierre  
info.fr@soltop-energie.ch

**SOLTOP Energie SA**  
Avenue Haldimand 41  
1400 Yverdon-les-Bains  
info.fr@soltop-energie.ch