



Duraklick

ECO 0°

Roofparallel Mounting-System ECO 0°

Duraklick

A brand of SOLTOP Energie GmbH

approved by
German Institute
for Building
Technologies

The Duraklick ECO 0° system is an economical alternative to conventional roof-parallel rooftop systems. As a rule, it enables roof-penetration-free installation on flat and slightly pitched roofs made of bitumen, foil or metal.

It consists of the same high-quality components as our proven flat of systems. Thanks to the special building protection mat under the 230 mm wide base profiles, we guarantee optimum protection of the roof cladding. Lower roof pitches can be stabilized purely by ballast. For monopitch roofs with pitches of over 3.5° (for membrane roofing) or over 5° (for bitumen roofs), additional anti-slip protection is required. For pitched roofs with greater pitches, the base profile is simply guided over the ridge.

The ECO 0° installation system is characterized by its high flexibility and can be easily adapted to different roof types, installation requirements and site conditions.

**soltop
energie**

Easy to
assemble

Non-roof-
penetrating

Maximum
space utilization

For more information, please visit www.soltop-energie.ch & www.soltop-energie.eu

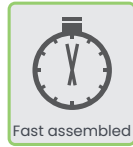
SOLTOP Energie AG
St. Gallerstrasse 3
CH-8353 Elgg
info@soltop-energie.ch

SOLTOP Energie GmbH
Lindauer Straße 15
D-88145 Hergatz
info@soltop-energie.eu

SOLTOP Energie SA
Rue des Sablons 8
CH-3960 Sierr
info.fr@soltop-energie.ch

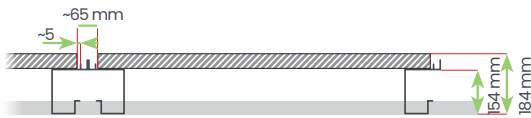
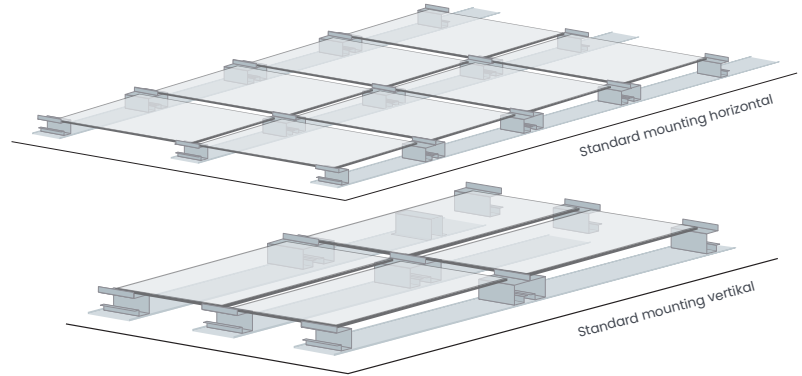
SOLTOP Energie SA
Avenue Haldimand 41
CH-1400 Yverdon-les-Bains
info@soltop-energie.ch

Roofparallel Mounting-System ECO 0°



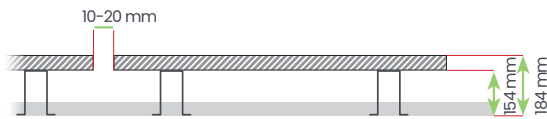
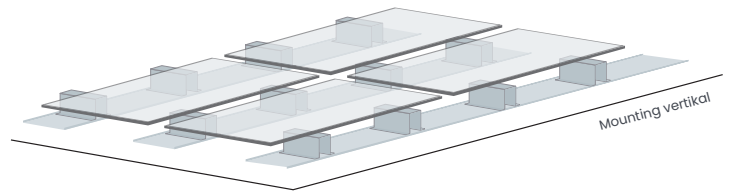
ECO 0° „Standard“

Cost-effective, flexible installation in vertical and horizontal alignment. The modules are clamped in the corner area - horizontally on the short side, vertically on the long side - with 70 mm long module clamps and earthing pin.



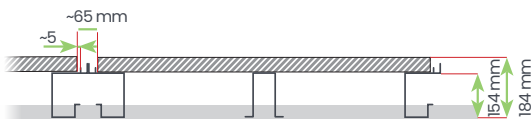
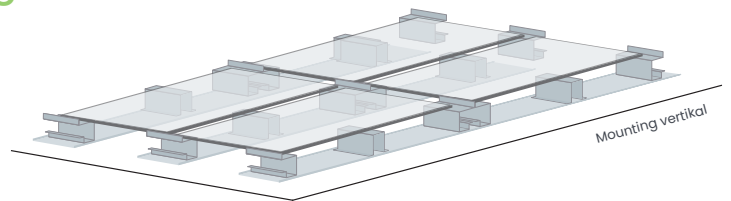
ECO 0° „Optimum clamping“

Enables secure installation at the specified clamping areas of the modules, even with high snow and wind loads. Requires vertical installation at a maximum roof pitch of 10°.



ECO 0° „6-point support/clamping“

This system uses both types of supports with six support or clamping points, ideal for locations with high snow and wind loads, even on steeper roofs.



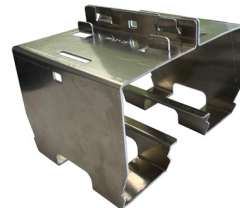
Technical specifications

Inclination 0°
 Rail length 0,3 - 6,0 m
 Surface load from 13,1 kg/m² *
 Line load from 21,6 kg/m *
 Material aluminium /stainless steel
 * assuming a module weight of ~23 kg

Module support „Standard“

Two pieces make one hooked into the other!

Module support „ECO 0° Optimal“



For more information, please visit www.soltop-energie.ch & www.soltop-energie.eu

SOLTOP Energie AG
 St. Gallerstrasse 3
 CH-8353 Elgg
 info@soltop-energie.ch

SOLTOP Energie GmbH
 Lindauer Straße 15
 D-88145 Hergatz
 info@soltop-energie.eu

SOLTOP Energie SA
 Rue des Sablons 8
 CH-3960 Siere
 info.fr@soltop-energie.ch

SOLTOP Energie SA
 Avenue Haldimand 41
 CH-1400 Yverdon-les-Bains
 info@soltop-energie.ch