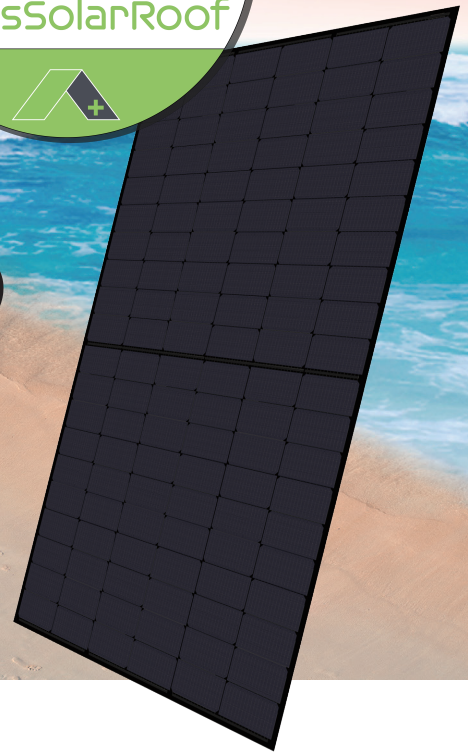


**Haitai TaiHe2.0** (182)

**HTM465~485DMH5-60NT (S)**  
TOPCon Bifacial high efficiency PV module

**20.87%**  
Module Efficiency



## PRODUCT FEATURES

**High Power Output**  
N-type MBB half cut technology, improve energy density, bring higher power output.  
High Bifacial Factor, up to 25% extra power generation

**High Durability**  
Passed TUV Salt & Ammonia corrosion test, and 2400Pa wind load, 5400Pa snow load test, higher reliability

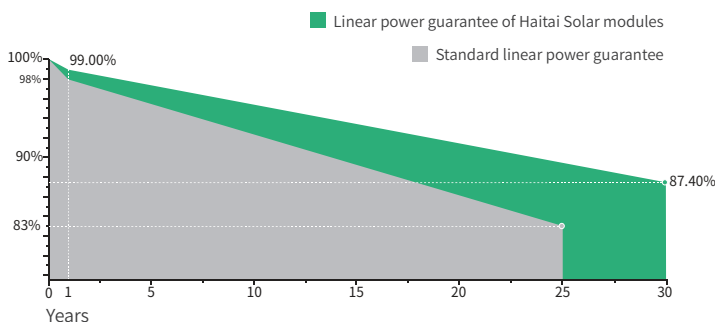
**Better Low Light Performance**  
Higher power generation compare with standard module in cloudy, foggy and low light condition

**Low Power Degradation**  
First year power degradation <1.0%, year 2-30 power degradation <0.40% each year

**Low Temperature coefficient**  
Passivated contact cell technology for higher power generation in operating

**Better Anti-LID**  
N-type cells with boron-oxide-free composite LID to increase module power generation

## LINEAR PERFORMANCE WARRANTY



**15 YEARS** product warranty

**30 YEARS** linear power warranty

**0.40%** Linear attenuation of 0.40% per year within 30 years

## CERTIFICATES

- ISO 9001: 2015 Quality Management System
- ISO 14001: 2015 Environment Management System
- ISO 45001: 2018 Occupational health and safety management systems
- IEC62941:2019 Photovoltaic Module Manufacturer Quality Management System

## Electrical Data (STC)

Maximum Power (Pmax/W)	465	470	475	480	485
Open Circuit Voltage (Voc/V)	42.80	42.95	43.10	43.25	43.40
Short Circuit Current (Isc/A)	13.58	13.68	13.78	13.87	13.97
Voltage at Maximum Power (Vmp/V)	35.92	36.07	36.22	36.37	36.52
Current at Maximum Power (Imp/A)	12.95	13.04	13.12	13.20	13.29
Module Efficiency (%)	20.30	20.52	20.74	20.95	21.17
Operating Temperature	-40° C~+85° C				
Maximum System Voltage	1000/1500V				
STC (Standard Testing Conditions): Irradiance 1000W/m <sup>2</sup> , Cell Temperature 25°C, AM1.5					

## Electrical Data (NMOT)

Maximum Power (Pmax/W)	350	354	358	362	366
Open Circuit Voltage (Voc/V)	40.64	40.79	40.94	41.09	41.24
Short Circuit Current (Isc/A)	11.11	11.2	11.28	11.37	11.45
Voltage at Maximum Power (Vmp/V)	33.37	33.52	33.67	33.82	33.97
Current at Maximum Power (Imp/A)	10.49	10.56	10.64	10.71	10.78
NMOT (Nominal Module Operating Temperature): Irradiance 800W/m <sup>2</sup> , Ambient Temperature 20°C, AM1.5, Wind Speed 1m/s.					

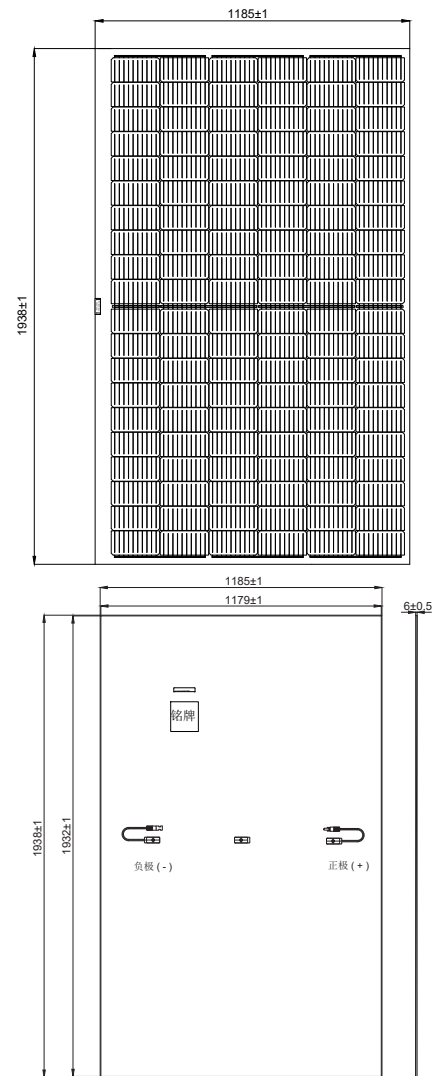
## Mechanical Data

Cell Type	182×91mm Mono
Cell Orientation	80(4×20)
Module Dimensions	1938×1182×6mm
Weight	32.6kg
Front Glass	3.2mm high transmittance, reinforced glass
Back Glass	2.0mm part of the structure is grid-like black ceramic glass
Junction Box	Protection class IP68
Cable	4.0 mm <sup>2</sup> positive pole: 1200 mm negative pole: 1200 mm wire length can be customized
Connector	Staubli connector

## Temperature Coefficients

Temperature Coefficient (Pm)	-0.290%/°C
Temperature Coefficient (Voc)	-0.250%/°C
Temperature Coefficient (Isc)	0.045%/°C
NMOT (Nominal Module Operating Temperature)	41±3°C

## Module Dimensions (mm)



## I-V Curve

