

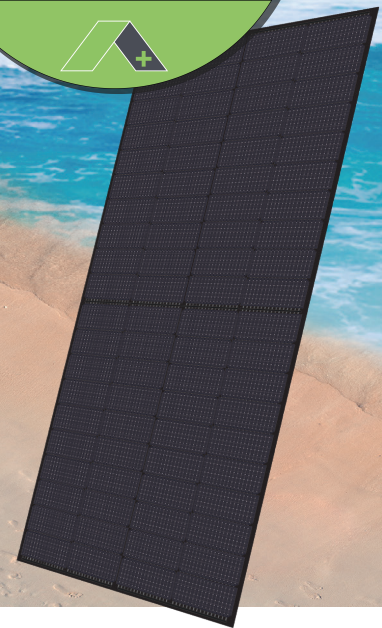
Haitai TaiHe2.0 182

HTM310~330DMH5-40NT

TOPCon Bifacial high efficiency PV module

20.87%

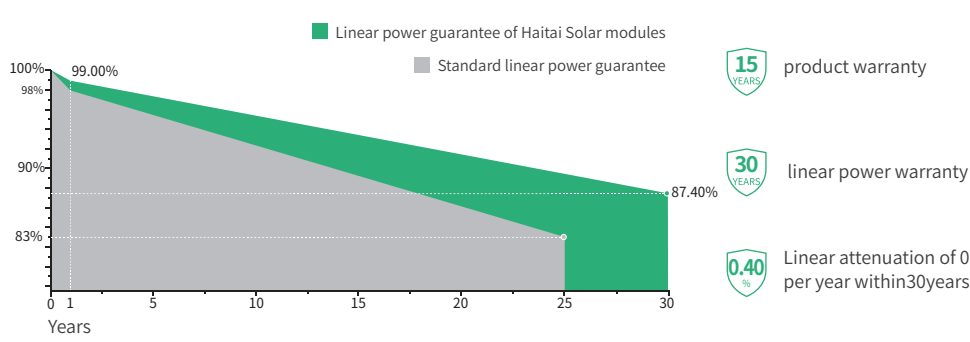
Module Efficiency



PRODUCT FEATURES

- | | |
|---|---|
| <p>High Power Output
 N-type MBB half cut technology, improve energy density, bring higher power output.
 High Bifacial Factor, up to 25% extra power generation</p> <p>High Durability
 Passed TUV Salt & Ammonia corrosion test, and 2400Pa wind load, 5400Pa snow load test, higher reliability</p> <p>Better Low Light Performance
 Higher power generation compare with standard module in cloudy, foggy and low light condition</p> | <p>Low Power Degradation
 First year power degradation <1.0%, year 2-30 power degradation <0.40% each year</p> <p>Low Temperature coefficient
 Passivated contact cell technology for higher power generation in operating</p> <p>Better Anti-LID
 N-type cells with boron-oxide-free composite LID to increase module power generation</p> |
|---|---|

LINEAR PERFORMANCE WARRANTY



CERTIFICATES

- ISO 9001: 2015 Quality Management System
- ISO 14001: 2015 Environment Management System
- ISO 45001: 2018 Occupational health and safety management systems
- IEC62941:2019 Photovoltaic Module Manufacturer Quality Management System

15 YEARS product warranty

30 YEARS linear power warranty

0.40% Linear attenuation of 0.40% per year within 30 years

Electrical Data (STC)

Maximum Power (Pmax/W)	310	315	320	325	330
Open Circuit Voltage (Voc/V)	28.30	28.45	28.60	28.75	28.90
Short Circuit Current (Isc/A)	13.69	13.84	13.99	14.13	14.27
Voltage at Maximum Power (Vmp/V)	23.71	23.86	24.01	24.16	24.31
Current at Maximum Power (Imp/A)	13.07	13.21	13.33	13.45	13.57
Module Efficiency (%)	19.60	19.92	20.24	20.55	20.87
Operating Temperature	-40° C~+85° C				
Maximum System Voltage	1000/1500V				
STC (Standard Testing Conditions): Irradiance 1000W/m ² , Cell Temperature 25°C, AM1.5					

Electrical Data (NMOT)

Maximum Power (Pmax/W)	234	238	242	246	250
Open Circuit Voltage (Voc/V)	26.89	27.03	27.17	27.31	27.46
Short Circuit Current (Isc/A)	11.21	11.34	11.47	11.60	11.73
Voltage at Maximum Power (Vmp/V)	22.13	22.24	22.36	22.48	22.60
Current at Maximum Power (Imp/A)	10.55	10.68	10.80	10.92	11.04
NMOT (Nominal Module Operating Temperature): Irradiance 800W/m ² , Ambient Temperature 20°C, AM1.5, Wind Speed 1m/s.					

Bifacial Power Generation Parameters (Backside Gains)

5%	Maximum Power (Pmax/W)	326	331	336	341	347
	Module Efficiency (%)	20.58	20.91	21.25	21.58	21.91
15%	Maximum Power (Pmax/W)	357	362	368	374	380
	Module Efficiency (%)	22.54	22.91	23.27	23.63	24.00
25%	Maximum Power (Pmax/W)	388	394	400	406	413
	Module Efficiency (%)	24.50	24.90	25.29	25.69	26.08

Mechanical Data

Cell Type	182×91mm Mono
Cell Orientation	80(4×20)
Module Dimensions	1938×816×6mm
Weight	22.5kg
Front Glass	3.2mm high transmittance, reinforced glass
Back Glass	2.0mm part of the structure is grid-like black ceramic glass
Junction Box	Protection class IP68
Cable	4.0 mm ² positive pole: 1200 mm negative pole: 1200 mm wire length can be customized
Connector	Staubli connector

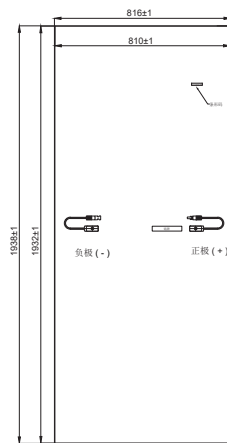
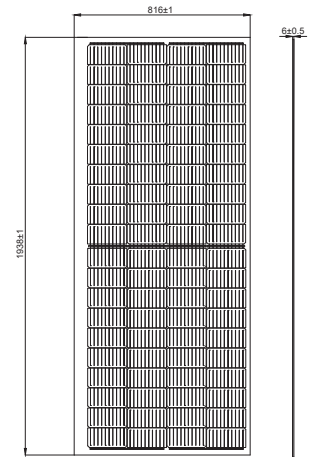
Temperature Coefficients

Temperature Coefficient (Pm)	-0.300%/°C
Temperature Coefficient (Voc)	-0.250%/°C
Temperature Coefficient (Isc)	0.046%/°C
NMOT (Nominal Module Operating Temperature)	41±3°C

Packaging

Transportation methods	Number of modules per cabinet	Number of modules per pallet
40HQ container	726 pcs	33+33 pcs
20HQ container	330 pcs	33+33 pcs

Module Dimensions (mm)



I-V Curve

