

ELECTRICAL PERFORMANCE

Electrical Parameters at Standard Test Conditions (STC)			
Module Type	JS185CB-48P		standard
Power output	P _{max}	W	185
Power output tolerances	ΔP _{max}	W	0-5
Module efficiency	η _m	%	18.99%
Voltage at P _{max}	V _{mpp}	V	15.1
Current at P _{max}	I _{mpp}	A	12.3
Open-circuit voltage	V _{oc}	V	17.7
Short-circuit current	I _{sc}	A	13.1

STC: 1000W/m² irradiance, 25°C cell temperature, AM1.5g spectrum according to EN 60904-3.

Average relative efficiency reduction of 3.0% at 200W/m² according to EN 60904-1.

OPERATING CONDITIONS

Max. system voltage	1500V _{DC}
Max. series fuse rating	20A
Operating temperature range	-40°C-85°C
Max. static load, front (e.g., snow)	see system
Max. static load, back (e.g., wind)	datasheet
Max. hailstone impact (diameter / velocity)	SwissSolarRoof
Warranty	15Y Materials and workmanship 30Y 88.27% Output Power guarantee

THERMAL CHARACTERISTICS

Nominal operating cell temperature	NOCT	°C	45 +/- 2
Temperature coefficient of P _{max}	γ	%/°C	-0.36
Temperature coefficient of V _{oc}	β _{Voc}	%/°C	-0.30
Temperature coefficient of I _{sc}	α _{Isc}	%/°C	0.05

CONSTRUCTION MATERIALS

Glass (material / thickness)	Low-iron tempered Acid glass (low reflective) 3.2mm+Low-iron Pattern Glass 2mm
Cell (quantity / material / dimension)	48/ Half-Cell M10 182.2*183.75
Baseplate (material)	EVA
Junction box (protection degree)	≥IP67
cable (length / cross-sectional area)	1150mm /4mm ² / Customizable
Plug connector (type / protection degree)	Original Stäubli/MC4 / IP67
Dimensions(L/W/TH)	1194mm / 816mm / 6mm
Weight	15kg
Packing	Pallets or wooden box

- Due to continuous innovation, research and product improvement, the specifications in this product information sheet are subject to change without prior notice. The specifications may deviate slightly and are not guaranteed.
- The date do not refer to a single module and they are not part of the offer, they only serve for comparison to different module types.

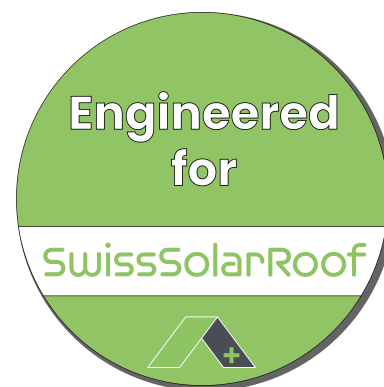
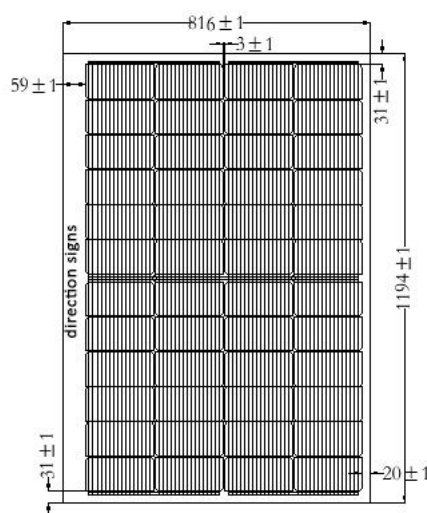
QUALIFICATIONS&CERTIFICATES

IEC 61215, IEC 61730, 3C, ISO 9001:2015, ISO 14001:2015, ISO 45001:2018.



PV GLASS DIMENSIONS

unit : mm



PACKAGING CONFIGURATION

Dimension: 1320*1140*1040mm

Weight: 605kg

35pcs/pallet, 1260pcs/40'HQ Container

Baoding Jiasheng Photovoltaic Tehnology Co., Ltd.

Email : salesb@yingligroup.com

Tel : +86-19931217900

Address : 88 Hengyuan West Road, Baoding National High-tech Zone, Hebei Province, China



Electrical Parameters at Standard Test Conditions (STC)

Module Type	JS310CB-80P		standard
Power output	P _{max}	W	310
Power output tolerances	ΔP _{max}	W	0-5
Module efficiency	η _m	%	19.6%
Voltage at P _{max}	V _{mpp}	V	25.3
Current at P _{max}	I _{mpp}	A	12.3
Open-circuit voltage	V _{oc}	V	29.5
Short-circuit current	I _{sc}	A	12.9

STC: 1000W/m² irradiance, 25°C cell temperature, AM1.5g spectrum according to EN 60904-3.

Average relative efficiency reduction of 3.0% at 200W/m² according to EN 60904-1.

OPERATING CONDITIONS

Max. system voltage	1500VDC
Max. series fuse rating	20A
Operating temperature range	-40°C-85°C
Max. static load, front (e.g., snow)	see system
Max. static load, back (e.g., wind)	datasheet
Max. hailstone impact (diameter / velocity)	SwissSolarRoof
Warranty	15Y Materials and workmanship 30Y 88.27% Output Power guarantee

THERMAL CHARACTERISTICS

Nominal operating cell temperature	NOCT	°C	45 +/- 2
Temperature coefficient of P _{max}	γ	%/°C	-0.36
Temperature coefficient of V _{oc}	β _{Voc}	%/°C	-0.30
Temperature coefficient of I _{sc}	α _{Isc}	%/°C	0.05

CONSTRUCTION MATERIALS

Glass (material / thickness)	Low-iron tempered Acid glass (low reflective) 3.2mm+Low-iron Pattern Glass 2mm
Cell (quantity / material / dimension)	80/ Half-Cell M10 182.2*183.75
Baseplate (material)	EVA
Junction box (protection degree)	≥IP67
cable (length / cross-sectional area)	1150mm /4mm ² / Customizable
Plug connector (type / protection degree)	Original Stäubli/MC4 / IP67
Dimensions(L/W/TH)	1938mm / 816mm / 6mm
Weight	24.5kg
Packing	Pallets or wooden box

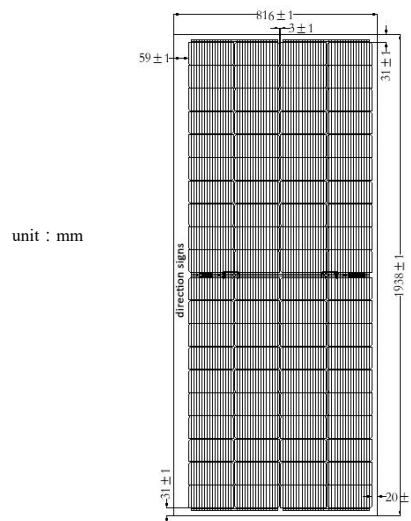
- Due to continuous innovation, research and product improvement, the specifications in this product information sheet are subject to change without prior notice. The specifications may deviate slightly and are not guaranteed.
- The date do not refer to a single module and they are not part of the offer, they only serve for comparison to different module types.

QUALIFICATIONS&CERTIFICATES

IEC 61215, IEC 61730, 3C, ISO 9001:2015, ISO 14001:2015, ISO 45001:2018.



PV GLASS DIMENSIONS



PACKAGING CONFIGURATION

Dimension : 2065*1140*1040mm

Weight : 995kg

35pcs/pallet,770pcs/40'HQ Container



Warning: Read the Installation and User Manual in its entirety before handling, installing, and operating Gain Solar modules.

Our Partners:

Baoding Jiasheng Photovoltaic Tehnology Co., Ltd.

Email : salesb@yingligroup.com

Tel : +86-19931217900

Address : 88 Hengyuan West Road, Baoding National High-tech Zone, Hebei Province, China